

# THEIR TURN

a gallery of this issue's contributors



PHOTO: LLYN STRELAU

## LLYN STRELAU'S Fall of Angels Necklace

18K gold arches with shield cut 6.23 ct rubellite tourmaline and 4.96 ct spessartite garnet cut by Stephen M. Avery, with golden-peach South Sea pearl and brilliant cut diamonds, InterCHANGE clasp©.

Learn more about this artist in "Cut Together," page 66.

## WANT TO CONTRIBUTE?



Share your expertise with other readers in a project, demo, or article and you'll be invited to show an example of your work here. Contributors' guidelines at [www.jewelryartistmagazine.com/guidelines](http://www.jewelryartistmagazine.com/guidelines) or request them by e-mailing [MWhite@Interweave.com](mailto:MWhite@Interweave.com), subject line: LJJG Guidelines.

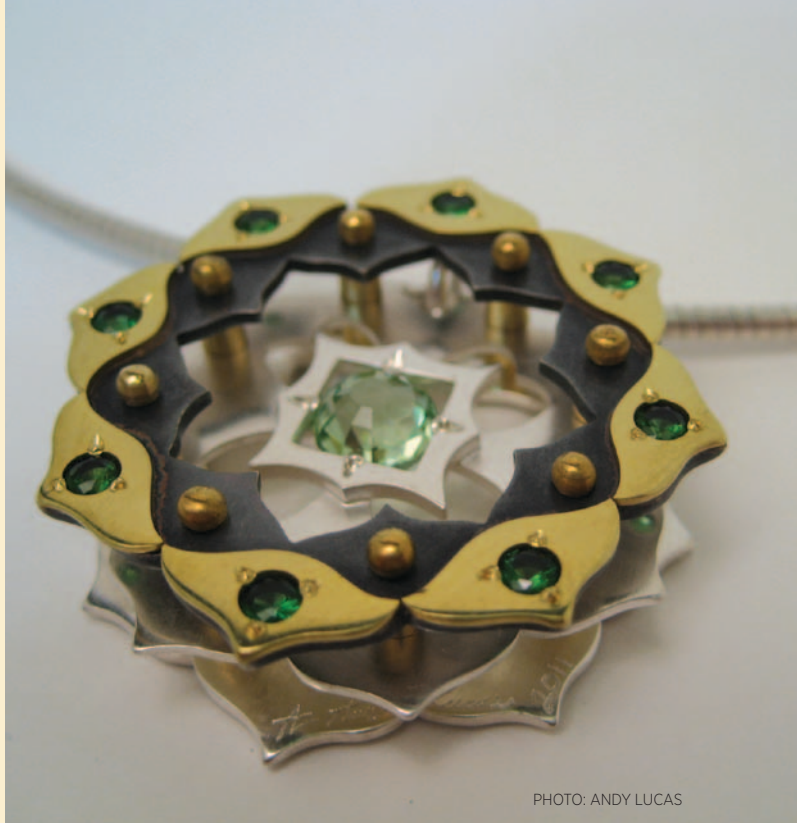


PHOTO: ANDY LUCAS

## ANDY LUCAS'S Pendant

Sterling and 18K yellow gold with disco ball cut tsavorite garnet and chrome tourmaline. From the collection of Tara McKnight.

Learn more from this artist in "Partial Settings Pendant," page 56



PHOTO: LINDA LARSEN

## LINDA LARSEN'S Pinwheel3

Agate geode lined with drusy quartz crystals from Brazil, nickel silver, leather.

Learn more from this artist in "Tabbed Fossil Coral Pendant," page 50

**MICHAEL SUGARMAN'S  
Banded Onyx Pendant and Earrings**

Learn more about this artist in Trends, page 54



PHOTO: RALPH GABRINER



PHOTO: JIM LAWSON

**HELEN DRIGGS'S  
Galapagos Tide Pool**

PMC pen with glass beads; hand built from nature molds taken in the field by the artist.

Learn more from this artist in Cool Tools & Hip Tips, page 18

**LISA ELSER'S  
Morganite**

9.75ct Afghani morganite in an original design. Faceting by Lisa Elser. Design by C. Tom Schlegel.

Learn more from this artist in "When to Saw Your Rough," page 74



PHOTO: C. TOM SCHLEGEL

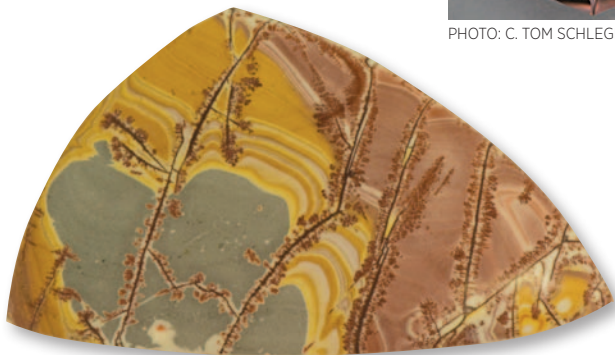


PHOTO: JOHN HEUSLER

**JOHN HEUSLER'S  
Sonoran Dendritic Rhyolite Cabochon**

New stone discovered in Mexico in 2010 and named by Heusler. Learn more from this artist in "Ethiopian Opal Ring," page 34



PHOTO: MARILYN MACK

**MARILYN MACK'S  
Pendant**

14K sterling silver with natural Sleeping Beauty turquoise, drusy agate, amethyst and apatite. Sheet and wire construction with hammer and bur texture. 2.5"L x 1.75"W.

Learn more from this artist in "Coquina Pendant," page 44